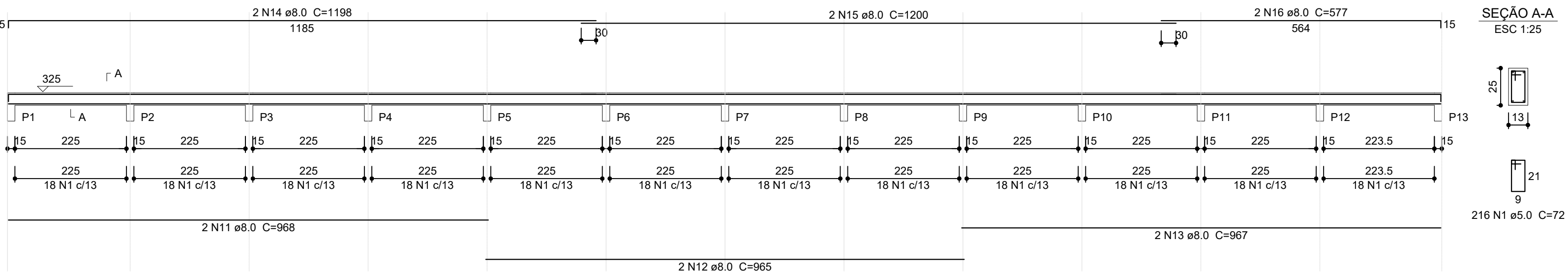


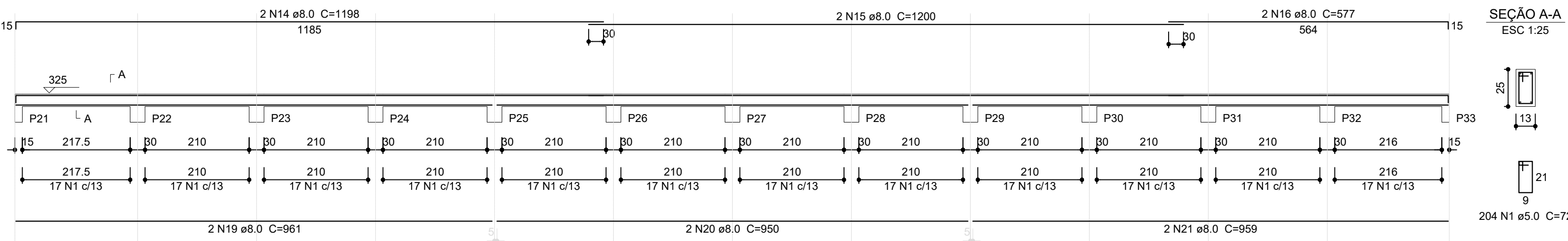
V1

ESC 1:75



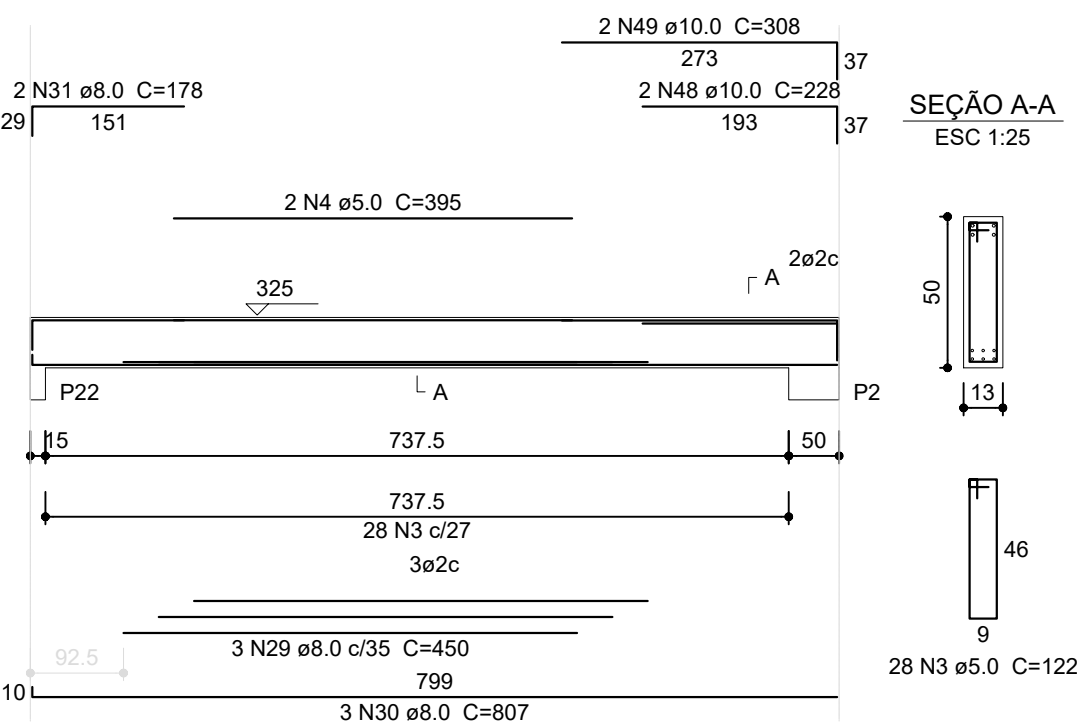
V3

ESC 1:75



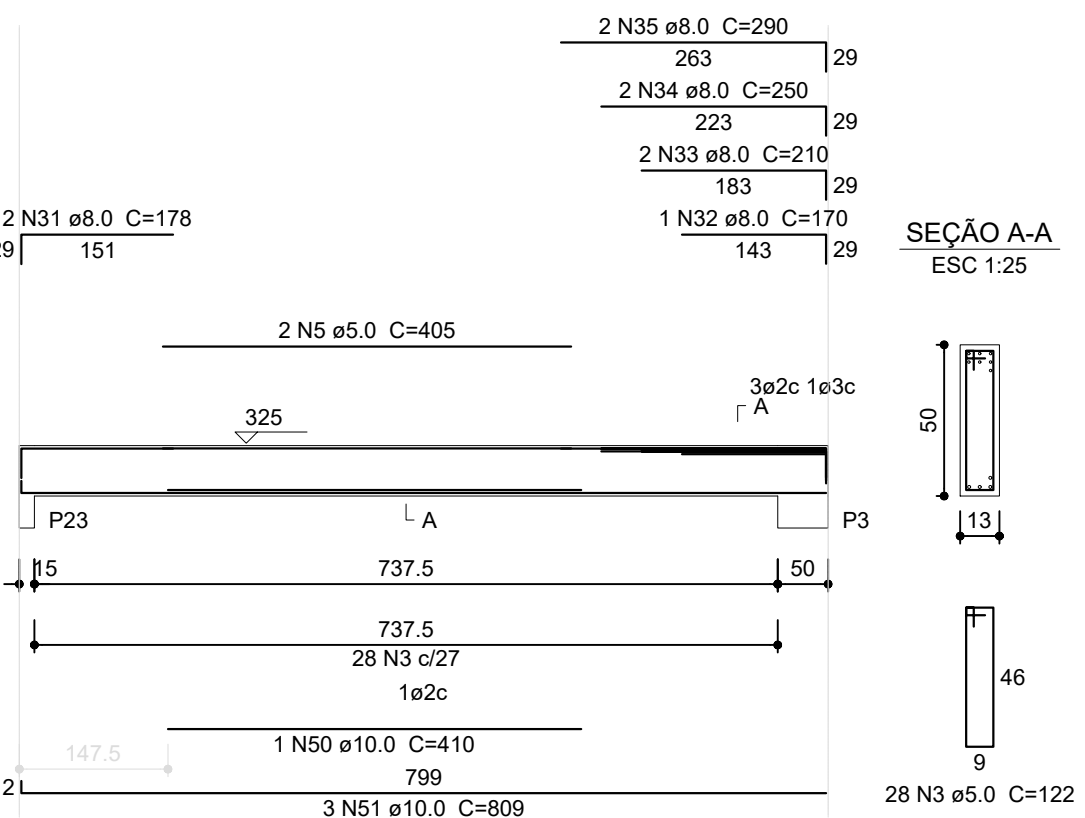
V6

ESC 1:75



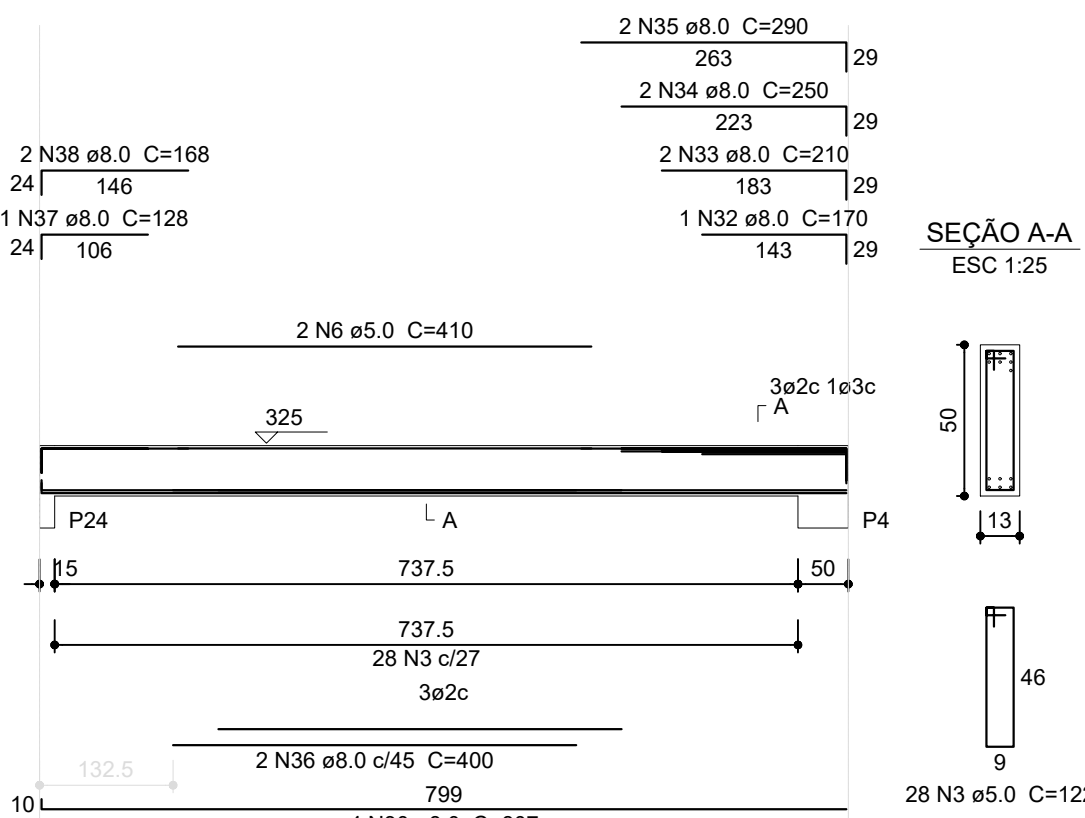
V7

ESC 1:75



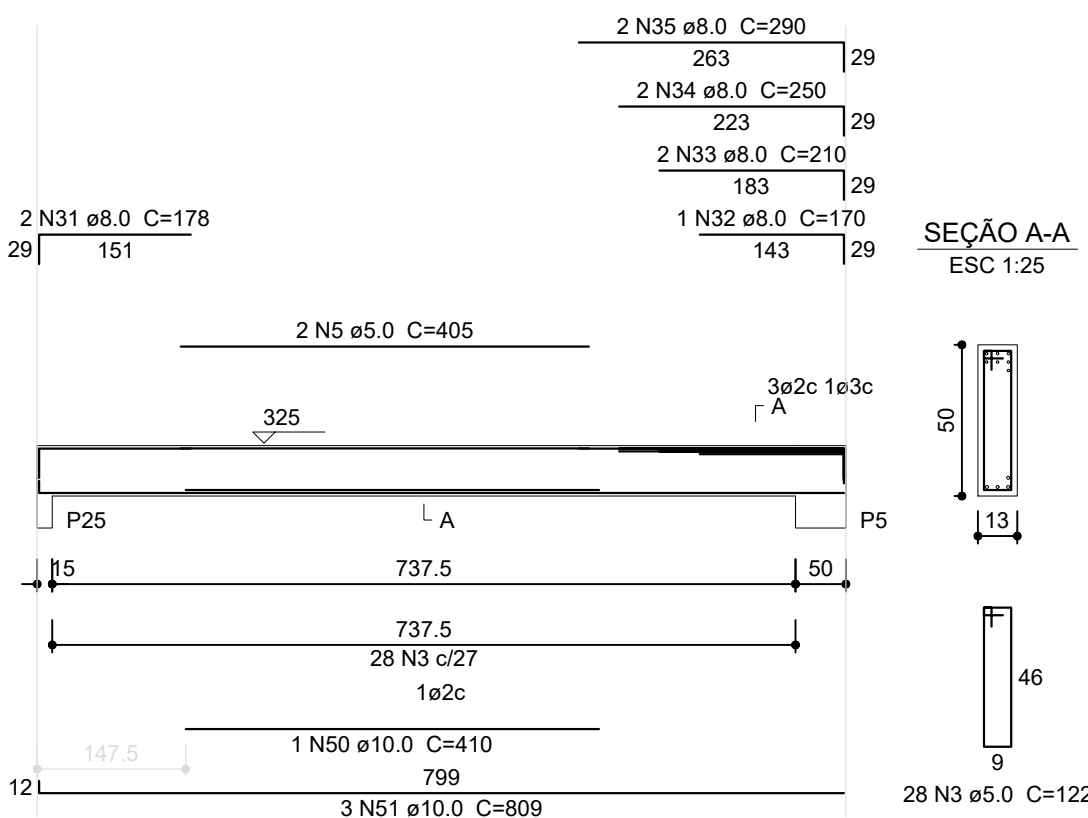
V8

ESC 1:75



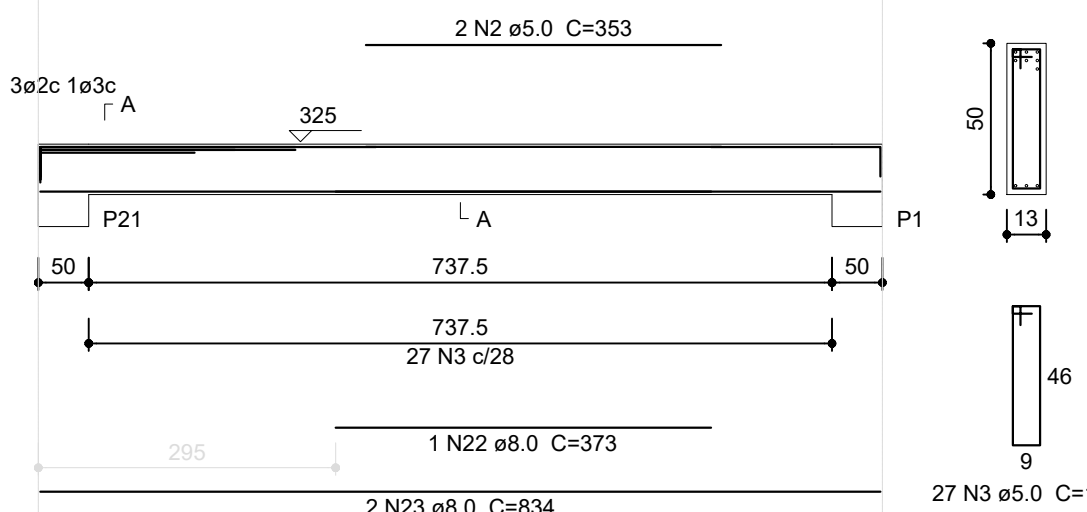
V9

ESC 1:75



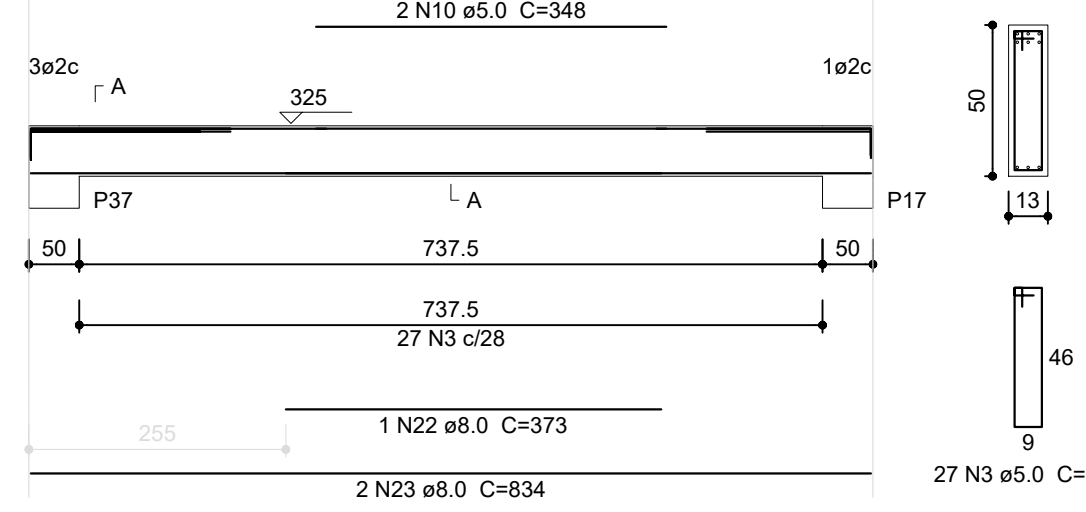
V5

ESC 1:75



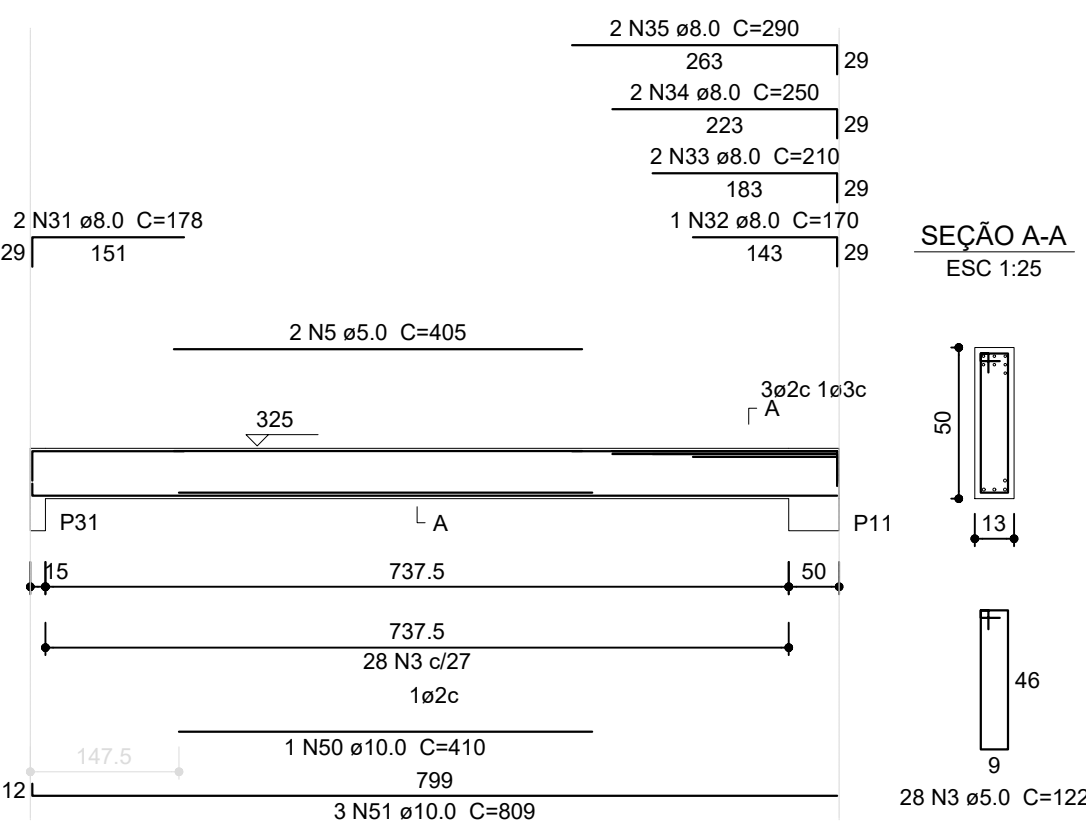
V21

ESC 1:75



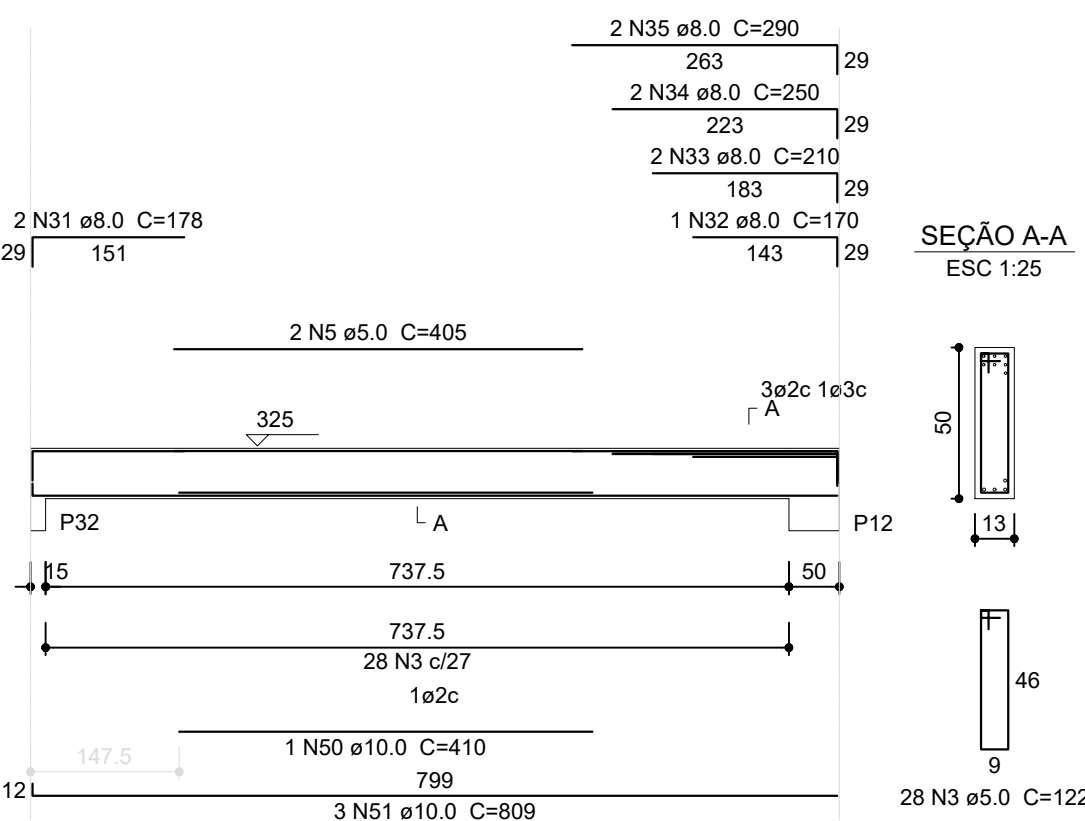
V15

ESC 1:75



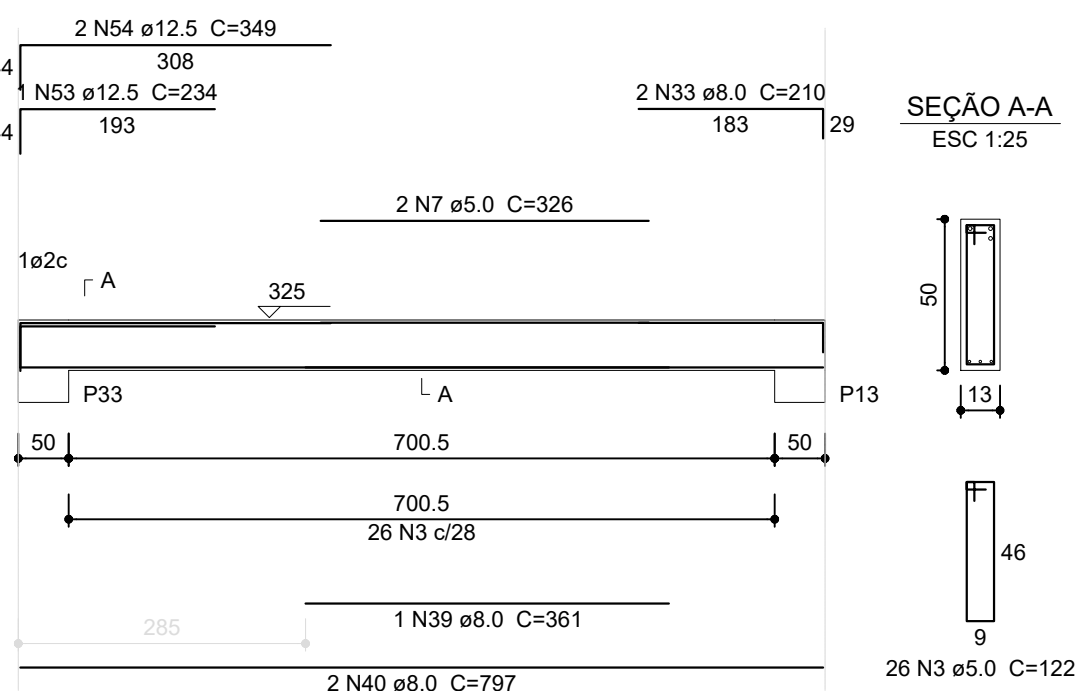
V16

ESC 1:75



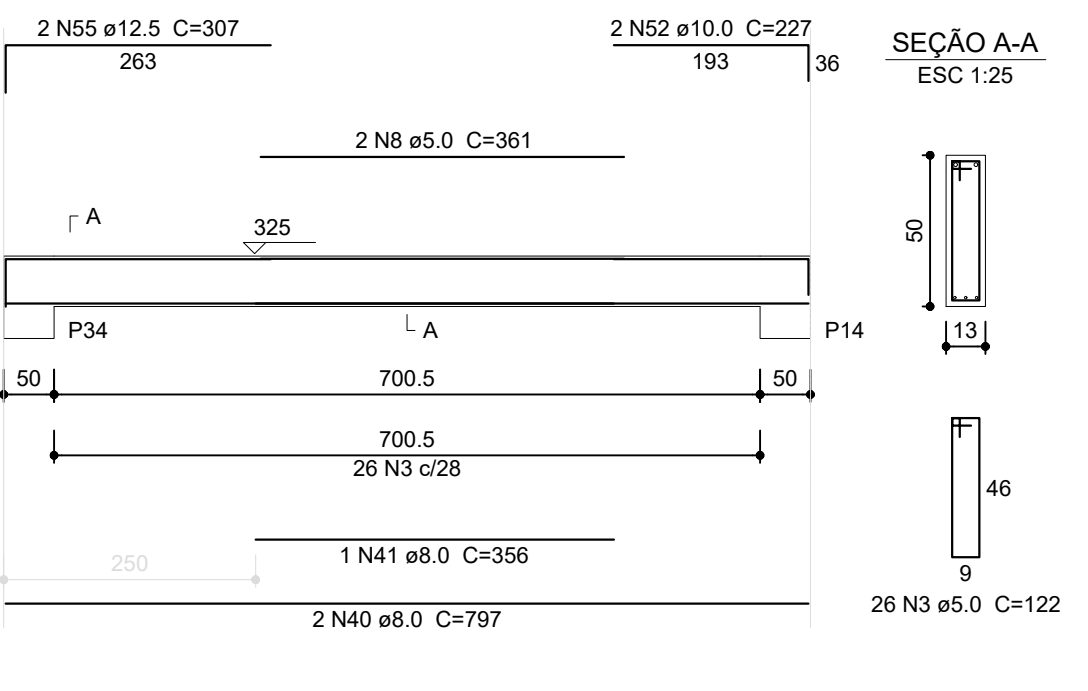
V17

ESC 1:75



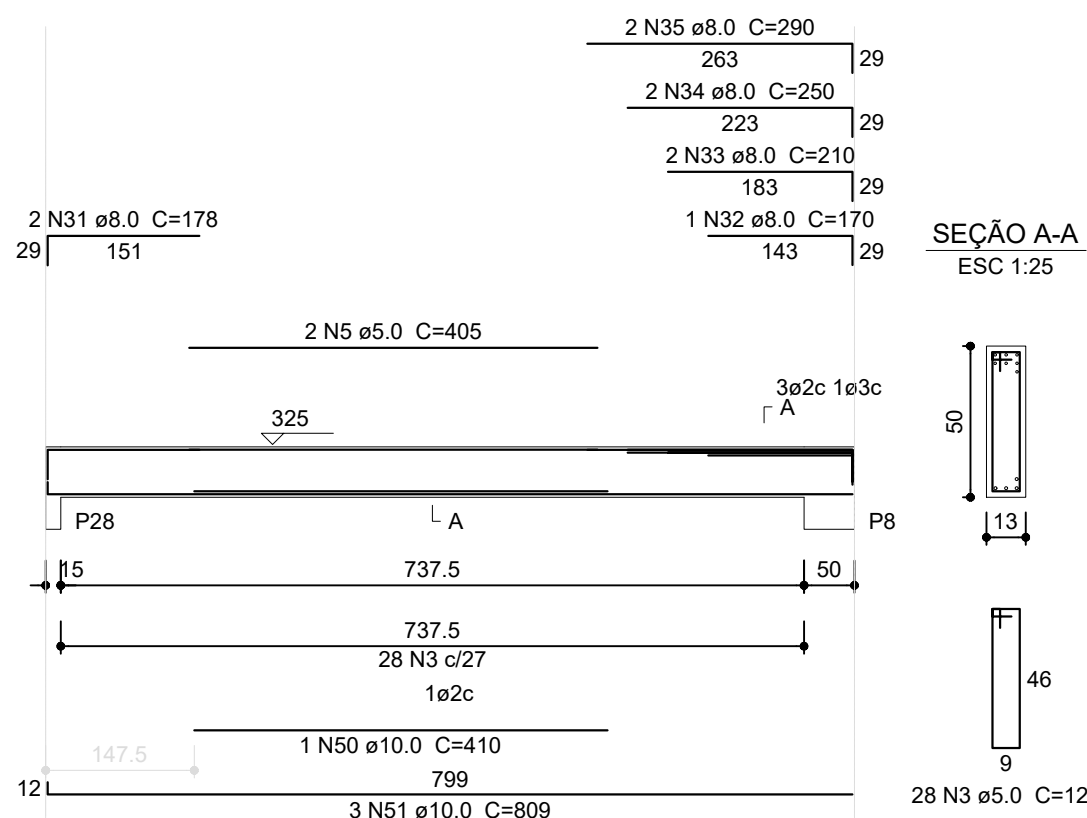
V18

ESC 1:75



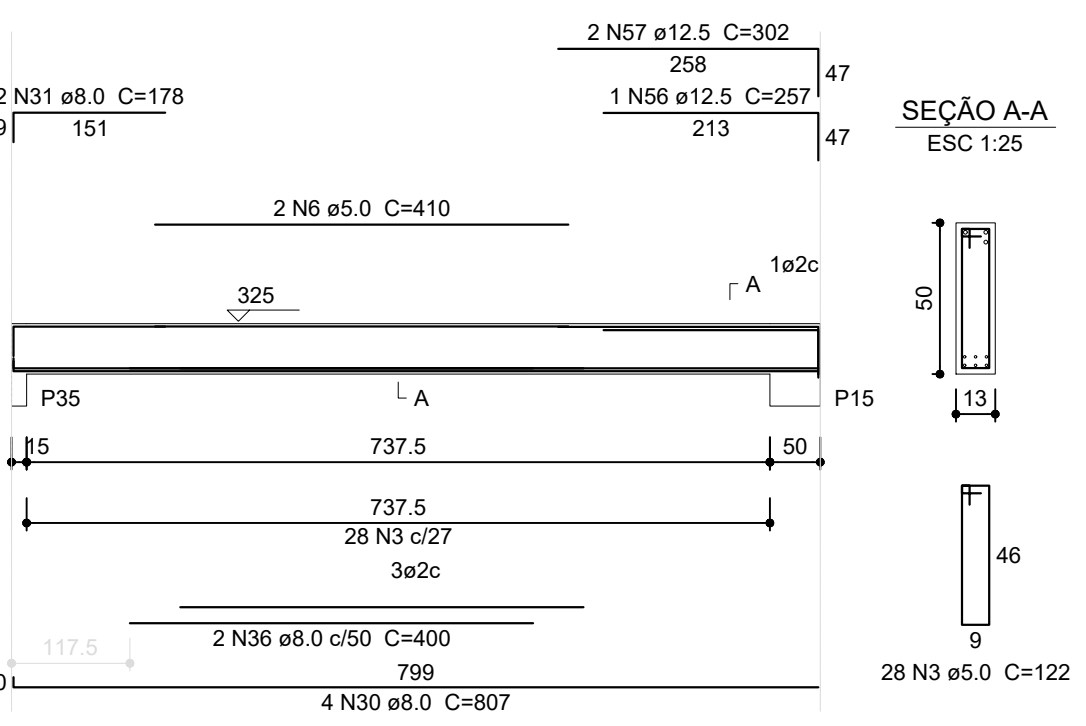
V12

ESC 1:75



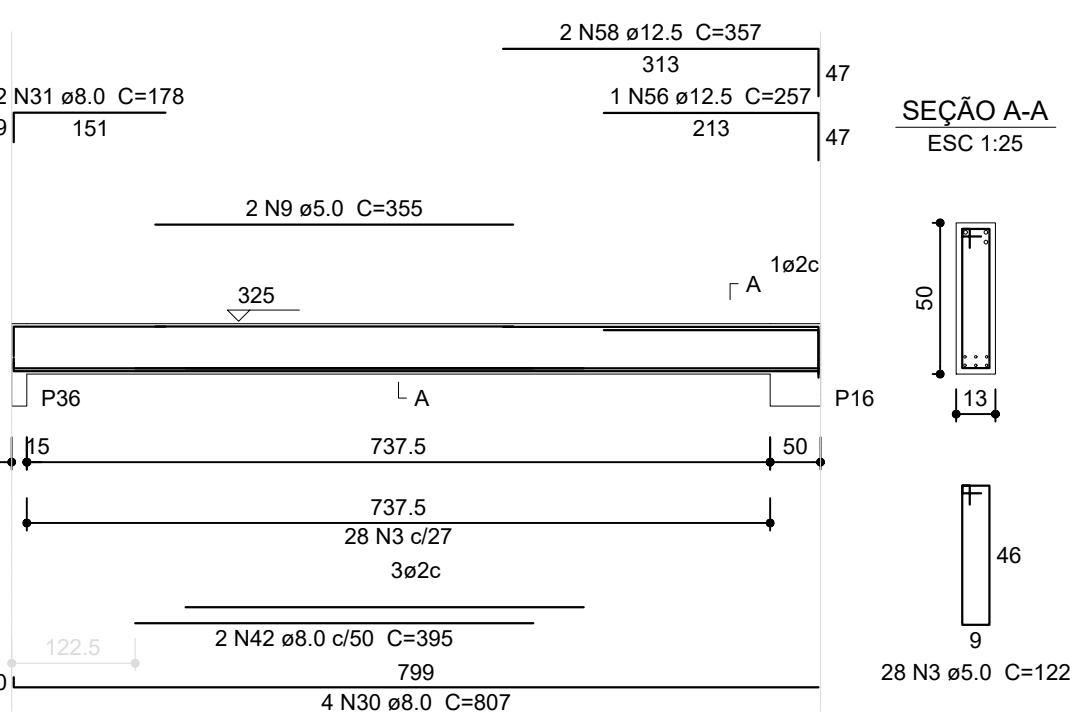
V19

ESC 1:75



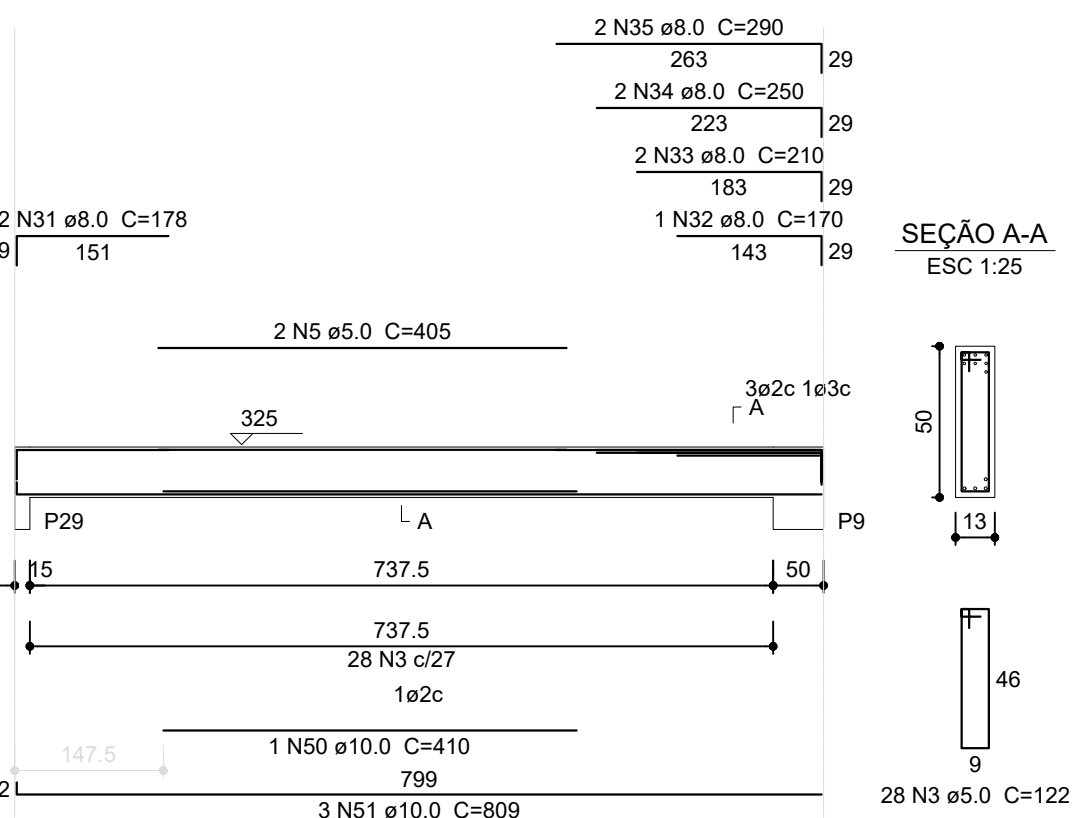
V20

ESC 1:75



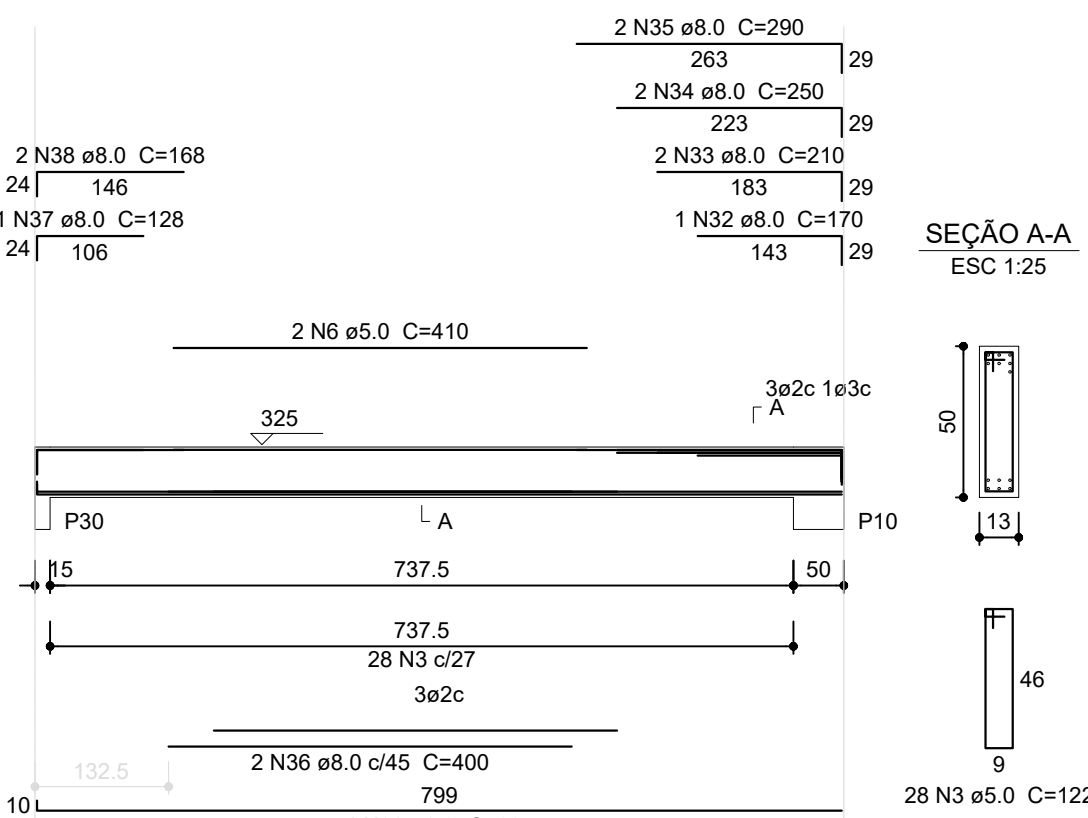
V13

ESC 1:75



V14

ESC 1:75



Resumo do aço

AÇO	DIAM (mm)	C-TOTAL (m)	PESO + 10 % (kg)
CA50	8.0	879.6	347.4
CA50	10.0	213.9	132.0
CA60	12.5	33.8	32.5
CA60	5.0	1083.7	166.9
PESO TOTAL (kg)			
CA50	512.0		
CA60	166.9		

Volume de concreto (C-25) = 11.27 m³  
Área de forma = 200.6 m²

1

VIGAS NÍVEL 325  
ESCALA: INDICADA



## PROJETO PADRÃO - FNDE

PROPRIETÁRIO: \_\_\_\_\_

ENDEREÇO: \_\_\_\_\_

MUNICÍPIO - UF: \_\_\_\_\_

PROPRIETÁRIO: \_\_\_\_\_

RESP. TÉCNICO: \_\_\_\_\_ CREA: \_\_\_\_\_

AUTOR DO PROJETO: \_\_\_\_\_ CAU: \_\_\_\_\_

DIFIO: \_\_\_\_\_ CREA: \_\_\_\_\_

RA: \_\_\_\_\_

OBSERVAÇÕES: \_\_\_\_\_

## ESCOLA 12 SALAS DE AULA

## PROJETO DE ESTRUTURA

COORDENAÇÃO CGEST - Coordenação Geral de Infraestrutura Educatonal	BLOCO E: PEDAGÓGICO VIGAS NÍVEL 325	SCV
REVISÃO R.03	ESCALA INDICADA DATA EMISSÃO MAIO/ 2014	PRANCHAS 29/42